



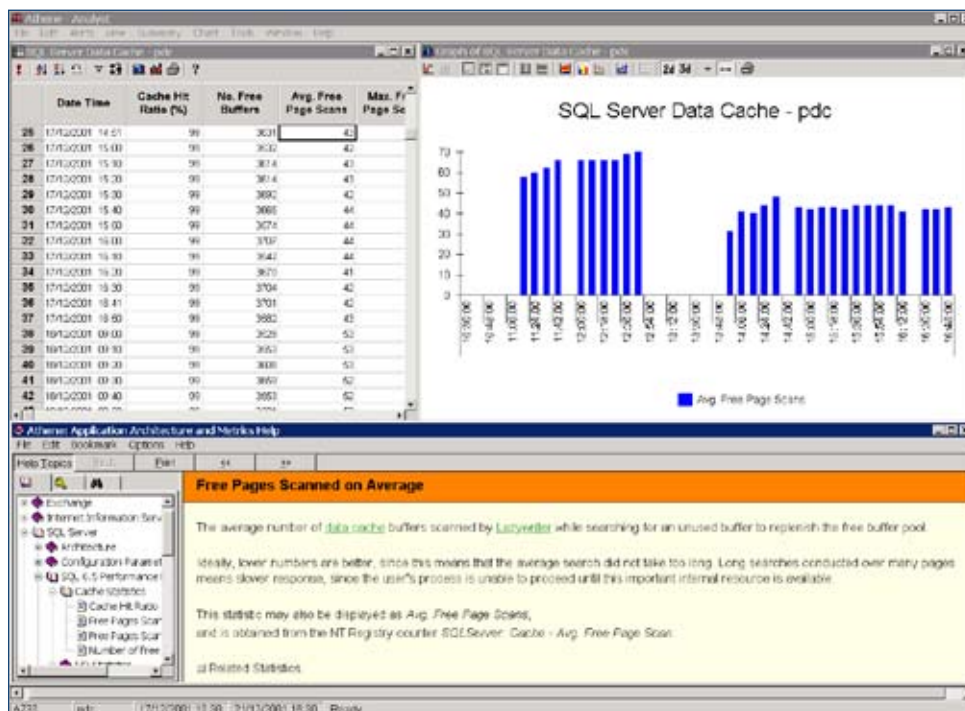
# Metron Athene Factsheet

## *Athene for SQL*

### Effective, accurate, consistent

Athene provides the database administrator and performance analyst with the means to investigate and present SQL Server performance and resource consumption data. Athene now unites the previously disparate worlds of SQL Server database performance analysis and operating system performance analysis.

The database administrator can easily understand performance issues within SQL Server. Better understanding means fewer performance crises and continuity of high quality end-user service levels.



#### Athene Benefits:

- Minimizes the cost to the organization of performance crises.
- Assures consistent service quality over time.
- Reduces the risk of future performance problems.

Athene for SQL

Athene displays metrics from multiple systems graphically. The performance of SQL Server applications is monitored to establish the relationship between performance and resource consumption. This provides effective control of service levels and accurate prediction of future resource requirements. The users receive the required service quality whilst the organization can plan expenditure in a timely and accurate manner.

Based on client-server architecture, Athene's Acquire data capture agent uses native reporting mechanisms which do not place an additional overhead on the system.

Utilization data is captured at user defined intervals including metrics on:

- User Activity and SQL
- Cache & Memory
- Buffer Manager
- Locks & Latches
- Access methods and Replication

Athene automatically manages Acquire data capture agents, collects the data from each of the systems monitored and updates a central performance database. Athene analyses and displays this data on a Windows workstation, avoiding the use of valuable resources on the SQL Server host. Athene supports SQL Server Versions 6.5, 7.0 and SQL Server 2000.

Athene's SQL Server performance analysis features:

- Fast and flexible graphical reporting
- Integration with operating system and process data

