



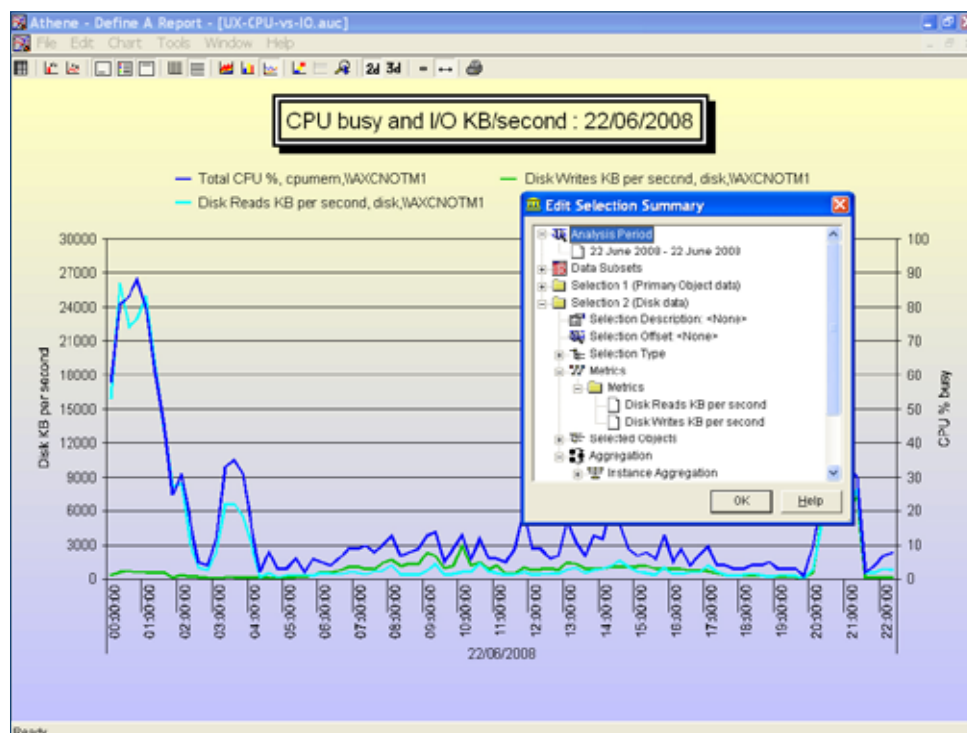
Metron Athene Factsheet

Automatic Reporting

Release from time-consuming tasks

Automatic Reporting enables the Athene user to define and produce regular performance reports. These reports are generated and published with no user intervention. This is ideal for management reporting, such as:

- Periodic reports, e.g. Weekly, monthly, quarterly
- Exception reports, e.g. Reports produced when performance breaches user defined thresholds.



Athene Benefits:

- Skilled support staff are released from routine but time-consuming tasks
- Automatic production of regular management information.

Automatic Reporting

With Automatic Reporting the user first creates and saves the definition of the report in a template and then schedules its production. Each time the report is required, Athene automatically creates it. Object linking and embedding techniques (OLE) within Athene ensure that each graph is updated with the correct data for the appropriate report period or event.

There are two elements in Automatic Reporting: a Report Template and a Report Schedule.

Template:

- The template is a named word processing document, i.e. The report you wish to create.
- When creating the template, simply describe the data and the appearance of the graph that you wish to appear on the report using Athene.
- Athene's graphical facilities allow every aspect of the graph's appearance to be customized.
- Once the Athene graph appears as you wish, just cut and paste it into the appropriate word processing document and save it.

Schedule:

The schedule defines the parameters for the report production. It states:

- The frequency with which the report is to be produced, e.g. Weekly, monthly.
- The period for which data is to be included, e.g. The last week, the last month.
- The name of the word processing document to be produced.
- How the report is to be distributed, e.g. File, print, e-mail, published in HTML format.

Running a Report

The Athene Application Scheduler then runs the report at the appropriate time. Behind the scenes the document and Athene are opened. The Application Scheduler automatically updates the Athene graphs in the document. Prior to distribution you have the option to review and edit any accompanying report text as appropriate. Athene takes care of the rest.

Athene Performance Management System

Automatic Reporting is one of the advanced functions available as standard in the Athene Performance Management System from Metron.

