

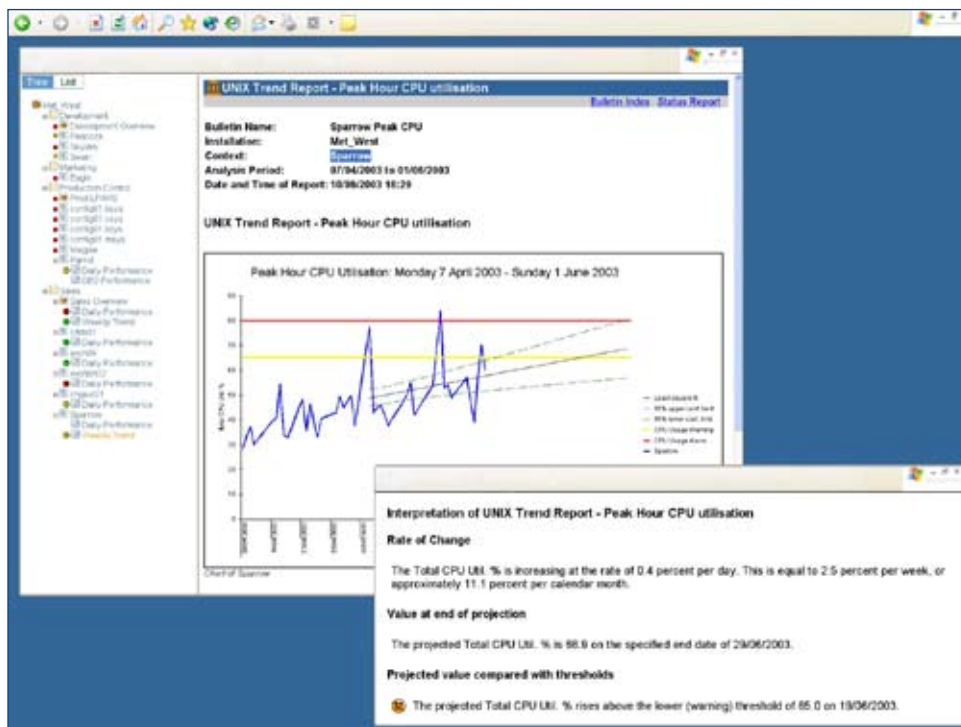


# Metron Athene Factsheet

## *Enterprise Wide Performance Reporting*

### Pro-active management of service

Athene lets you manage and report on the performance of all your IT resources. The performance database at the heart of Athene accepts all relevant data, from both Athene specific capture agents and from imported user data. Athene assists you in mining this database to create performance reports for management. Reports are as simple or as sophisticated as required. Dynamically updated trends make you aware of potential future problems long before they happen.



#### Athene's effective Enterprise Wide Performance Reporting features:

- Availability of all performance data at a single point
- Fast, flexible and clear reporting facilities.

#### Athene Benefits:

- Enterprise wide performance reporting
- Information – not data
- Proactive management of service.

Enterprise Wide Reporting

Managers need to see trends in performance quickly and easily so that action can be taken before problems become critical. Support staff need to see relationships between disparate resources such as mainframes, distributed client-server systems, networks and PCs.

Data typically brought together for reporting within Athene includes:

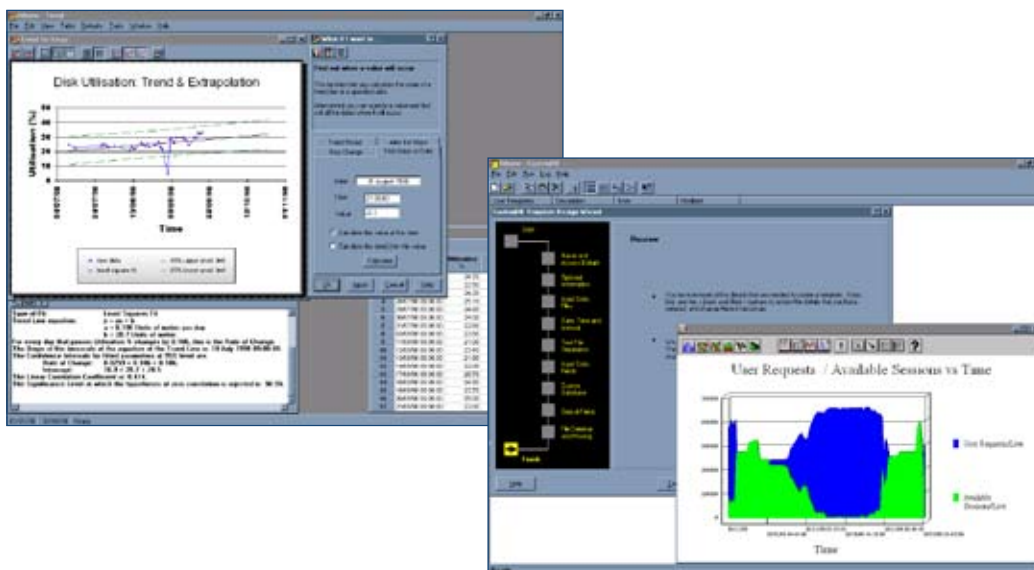
- System – Processor, disc, memory, caching, paging, swapping...
- User – Utilization by user, process, commands, commands per user...
- Databases – Oracle, SQL Server...
- Applications – Exchange, Internet Information Server, SAP R/3...
- Space – File system, Oracle table space...

Athene can provide analysis of any data imported with the data import facility provided by Athene CustomDB such as:

- Business and workload statistics for correlation against measured IT data
- HP OpenView (OVPA agent) data
- Network monitoring data
- Other operating system data, e.g. Tandem, AS/400, Unisys
- RDBMS data, e.g. Sybase, Informix, Ingres
- OLTP monitor statistics, e.g. Tuxedo, Encina
- Application statistics, e.g. WebSphere, Baan, ARM...

## Predicting the future

In addition to management reporting, Athene enables support staff to better understand relevant technical issues. A comprehensive range of statistical routines supports trend, seasonal and frequency analysis, comparison of variables, correlation and regression analysis. Predictions from Athene's planning module can be automatically compared against subsequently measured performance. Routines exist to facilitate aggregation and summarizing of data, automatic production of summaries and the maintenance and updating of trends.



## Athene Performance Management System

Enterprise Wide Performance Reporting is one of the advanced functions available as standard in the Athene Performance Management System from Metron.