

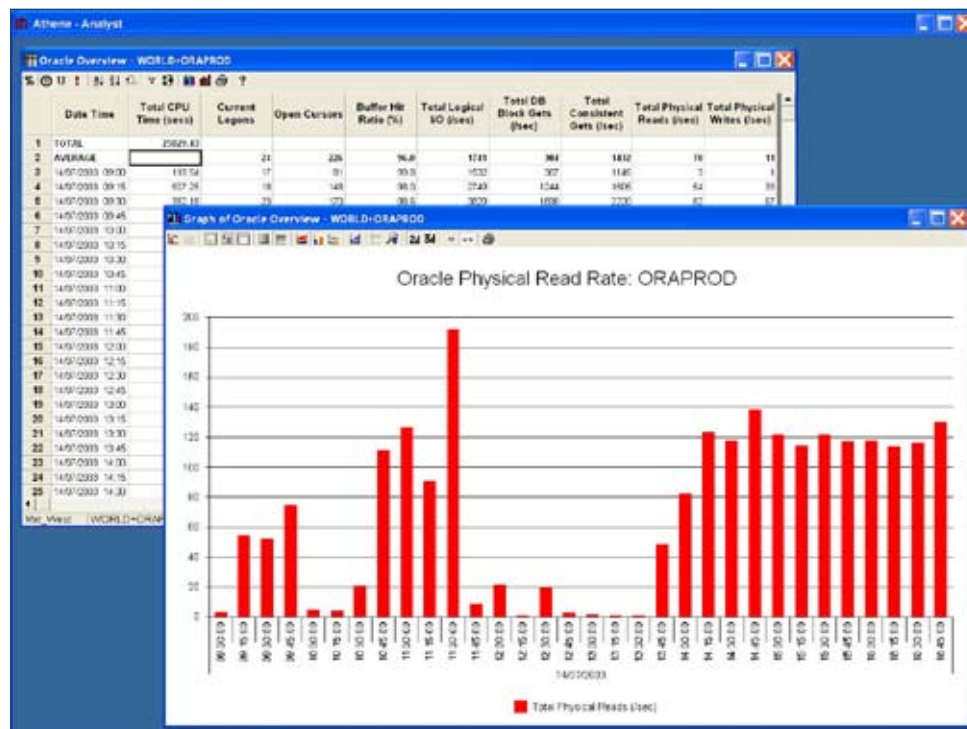


Metron Athene Factsheet

Oracle Performance Management

Fast and flexible graphical reporting

Athene provides the database administrator and performance analyst with the means to investigate and present Oracle performance and resource consumption data. The previously disparate worlds of Oracle database performance analysis and operating system performance analysis are now united by Athene. The database administrator can easily understand performance issues within Oracle. Better understanding means fewer performance crises and continuity of high quality end-user service levels.



Athene Benefits:

- Minimizes the cost to the organization of a performance crisis
- Assures consistent service quality over time
- Reduces the risk of future performance problems

Oracle Performance

Athene displays metrics from multiple systems graphically. The performance of Oracle applications is monitored to establish the relationship between performance and resource consumption. This provides effective control of service levels and accurate prediction of future resource requirements. The users receive the required service quality whilst the organization can plan expenditure in a timely and accurate manner.

Based on client-server architecture, Athene's Acquire data capture agent retrieves data from Oracle tables. Utilization data is captured at user defined intervals including: physical resources at global and session level, system and file table space, segments, and extents. Athene automatically manages Acquire data capture agents, collects the data from each of the systems monitored and updates a central performance database. Athene analyses and displays this data on a Windows PC, avoiding the use of valuable resources on the Oracle host.

Athene's Oracle performance analysis features:

- Analysis of global, session and file level performance data
- Fast and flexible graphical reporting
- Integration with operating system and process data

Athene Performance Management System

Performance Analysis is one of the advanced functions available as standard in the Athene Performance Management System from Metron.

