

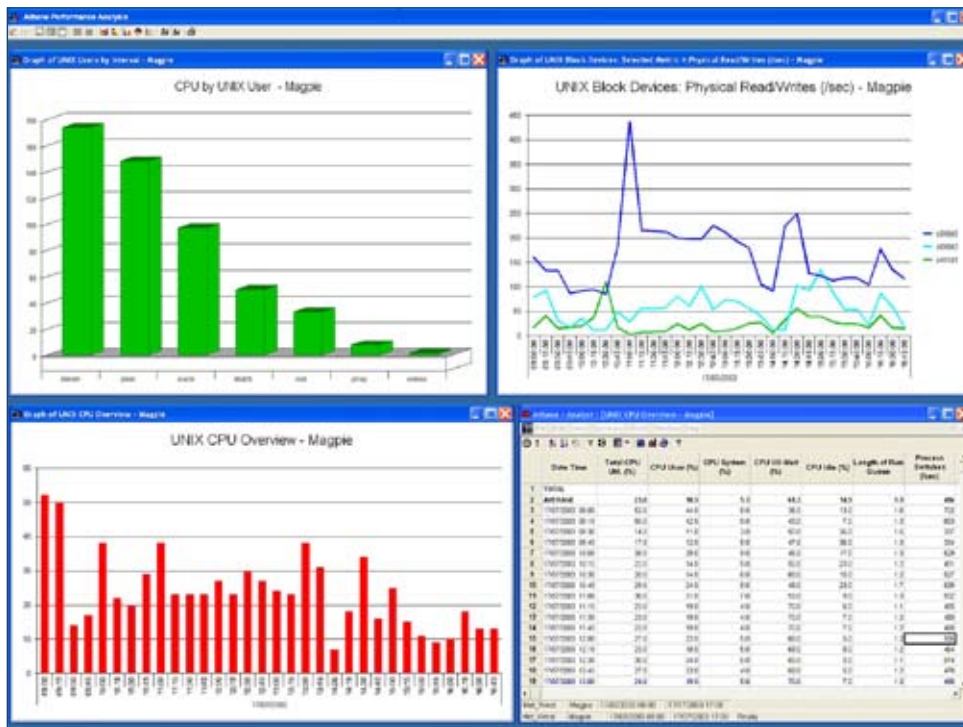


# Metron Athene Factsheet

## *Performance Analysis*

### Complete flexibility to tailor all reports

Athene provides analysis of current and recent system performance to identify and investigate problems and identify what courses of action are required to restore service levels.



#### Athene Benefits:

- Avoid wasting time on irrelevant metrics.
- Reduces support costs by automating data collection and centralizing management.
- Minimizes risk of a performance crises.

Performance Analysis

Athene provides the user with complete flexibility to tailor all reports. The required data items, the period of analysis and the format of the reports are all user definable. User defined templates can be stored for re-use. Reports can be automatically scheduled for production using the Automatic Reporting module or exported to other applications.

Clicking on a set of system data metrics allows investigation of trends in those metrics.

Using Athene's own data capture agents the user can analyze many facets of performance data including:

- System – Processor, disc, memory, caching, paging, swapping...
- User – Utilization by user, process, commands, commands per user...
- Databases – Oracle, SQL Server...
- Applications – Exchange, Internet Information Server, SAP R/3...
- Space – File system, Oracle table space...

In addition Athene can provide analysis of any data imported with the Athene CustomDB data import facility.

### Athene Performance Management System

Performance Analysis is one of the advanced functions available as standard in the Athene Performance Management System from Metron.

