



Metron - Athene, Inc.

Thank you for choosing to download Metron's Athene Virtual Appliance.

Background

Athene allows an enterprise to optimize on-going capacity, minimize over-spending on hardware, avoid the costs of performance crises, and guarantee service levels. Alert on trends to know when a capacity issue will begin to emerge. Model how to avoid potential performance problems, evaluate tuning and management strategies in advance, not in crisis mode.

Capacity Management forms a key element in Operational Readiness. After migration has been sized using the VMware Capacity Assessment, use Athene for day to day capacity management of the complete environment. Athene supports VMware as well as all other leading virtual and physical environments, enabling you to provide common capacity management processes, reports and a centralized capacity database across the entire enterprise.

Supported by Metron's 22 years of experience as a specialist in capacity management, Athene provides a full three tier capacity management implementation in line with the ITIL® 'good practice' framework.

For VMware partners, a joint Metron-VMware Service Acceleration Kit (SAK) is available providing all the commercial and technical collateral required generating revenue from the provision of capacity management services and software sales to your clients.

Athene capacity management for VMware from Metron:

- Performance reporting
- Capacity planning
- Sizing
- Modeling
- Trend analysis
- Server consolidation planning
- Hardware acquisition planning



Metron - Athene, Inc.

Athene Virtual Appliance

Metron's Athene Virtual Appliance offers a range of features to enable you to analyze VMware performance across your entire estate, report and create trends of behavior and analytically model future scenarios to optimize future configurations and expenditure.

The following are the specifics of the Virtual Appliance:

- Windows Server 2003, SQL Server 2005
- Athene 8.20.4
- User Name = AVA
- Password = MetronAthene
- Evaluation Period= 30 days
- Disk Space requirements: 14 GB when uncompressed

The Virtual Appliance can be installed in the following environments, procedures for each environment:

- VMware Player
 - We recommend that you have a 2 GHz or faster processor with a minimum of 2GB RAM
- VMware Workstation or Server
 - We recommend that you have a 2 GHz or faster processor with a minimum of 2GB RAM
- VMware ESX server as a guest
 - We recommend a single CPU Guest with a minimum of 2 GB of RAM

The link to download the VMware Player is:

<http://vmware.com/products/player/>

The link to download the VMware Server is

<http://www.vmware.com/products/server/>

This Virtual Appliance does not connect to your Enterprise Network thus allowing your security staff to review it if necessary.

Prior to starting the Athene software, a license file is required to allow you to use the Athene software for the evaluation period.

Please let us know when you have time to perform that install and we will work with you to get it up and running. We will also perform a walk thorough with on you with what is available on this Virtual Appliance. There is a Guided Tour document on the Virtual Appliance that will take you through the product. Our contact information is below.

6320 Canoga Avenue
Suite 1500
Woodland Hills, CA 91367
Tel: (818) 227-5019 Fax: (818) 227-5099



Metron - Athene, Inc.

Procedures for the Metron's Virtual Appliance:

VMware Player, VMware Server, VMware Workstation:

- Download the Metron Athene Virtual Appliance. It can be downloaded as one file or in parts.
- Unzip the Virtual Appliance by running Athene_VA.part01.exe or Athene_VA.exe. Fourteen GB of disk space will be needed uncompressed.
- Start the necessary VMware product
- From the Toolbar select
 - File
 - Open
 - Navigate to the folder where you saved the Virtual Appliance
- Then select "Start this virtual machine"

VMware Guest:

- Download the Metron Athene Virtual Appliance. It can be downloaded as one file or in parts.
- Unzip the Virtual Appliance by running Athene_VA.part01.exe or Athene_VA.exe. Fourteen GB of disk space will be needed uncompressed.
- Import the Virtual Appliance as a Guest into a Virtual Center Host of your choosing

Installation of Metron Athene License Key:

- Ensure all Athene applications are closed
- Ensure the Athene License Server service is stopped
- Install the license.dat file into the following folder:
 - C:\Program Files\Athene 8.00\Licensing
- Restart the Athene License Server service
- Resume Athene applications.

Contact Information:

Virtualappliance@metron-athene.com

Phone: 1-877-4Athene



Metron - Athene, Inc.

Procedures to start the Athene Virtual Appliance on VMware Player

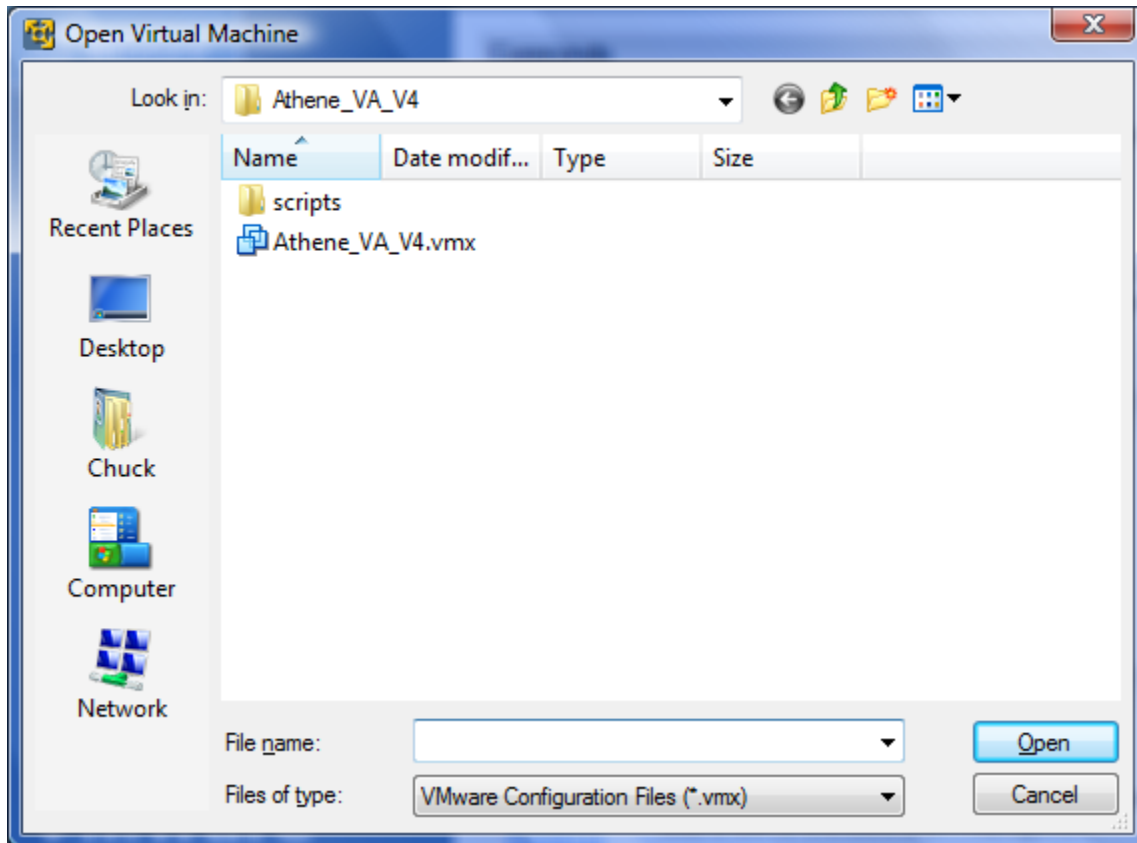
Start VMware player and then select Open





Metron - Athene, Inc.

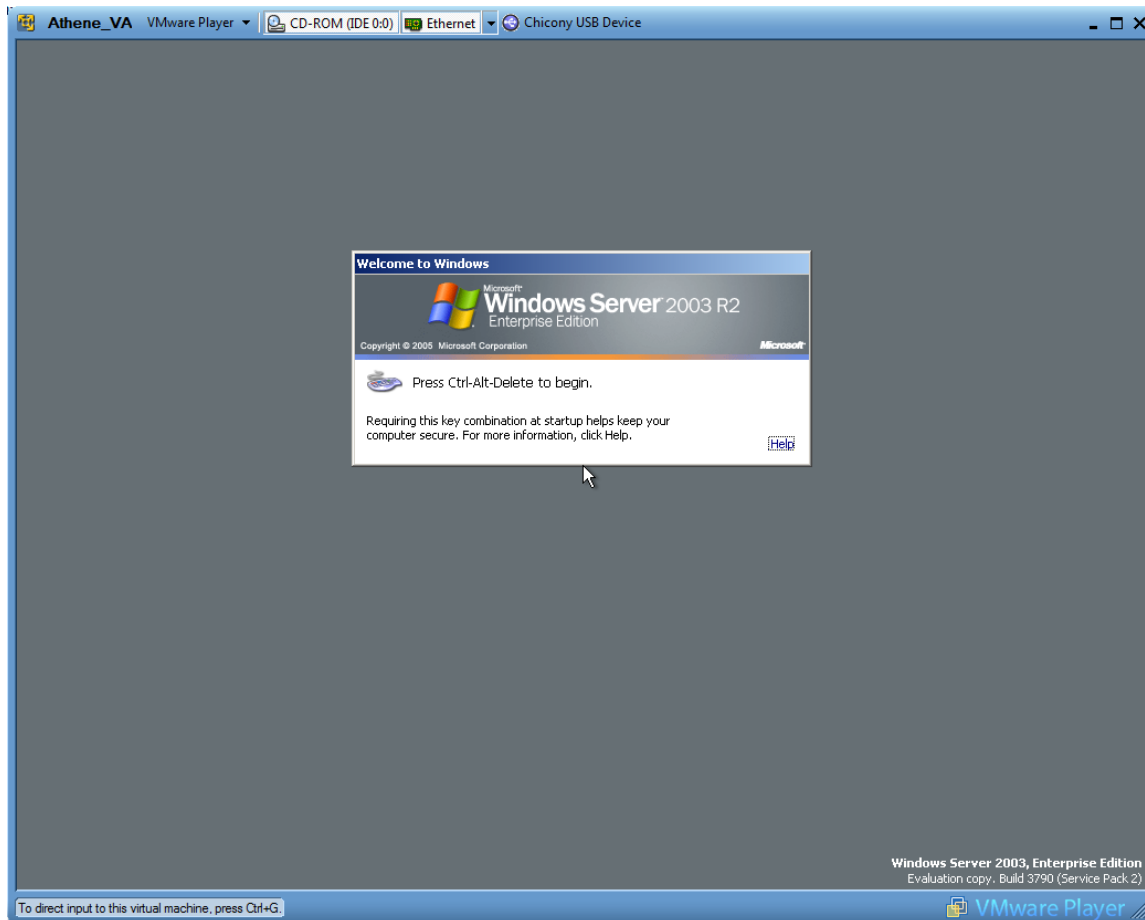
Navigate to where you uncompressed the Athene Virtual Appliance and select the .vmx file





Metron - Athene, Inc.

Once the Athene Virtual Machine has started you will receive the following screen, press CTRL-Delete-Insert to get the logon screen

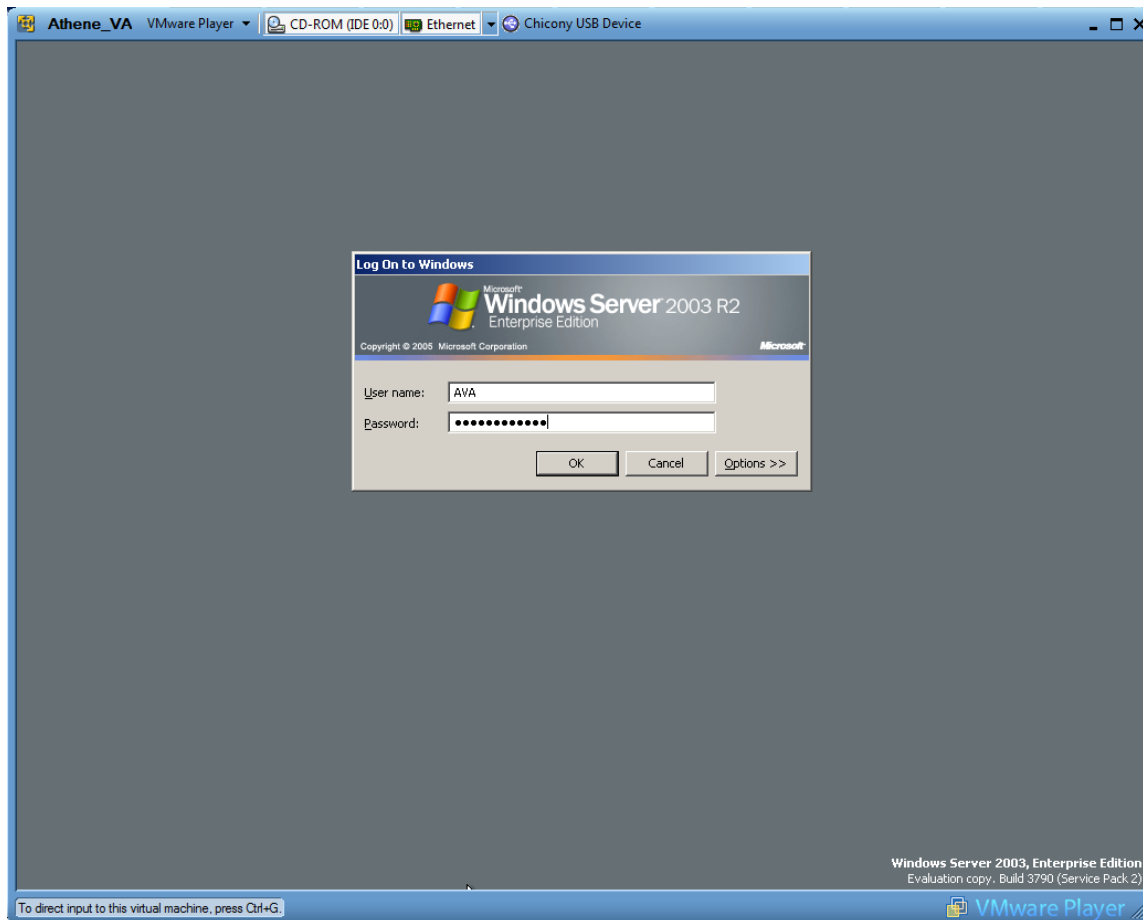


6320 Canoga Avenue
Suite 1500
Woodland Hills, CA 91367
Tel: (818) 227-5019 Fax: (818) 227-5099



Metron - Athene, Inc.

Enter Metron-Athene as the password, and then press enter

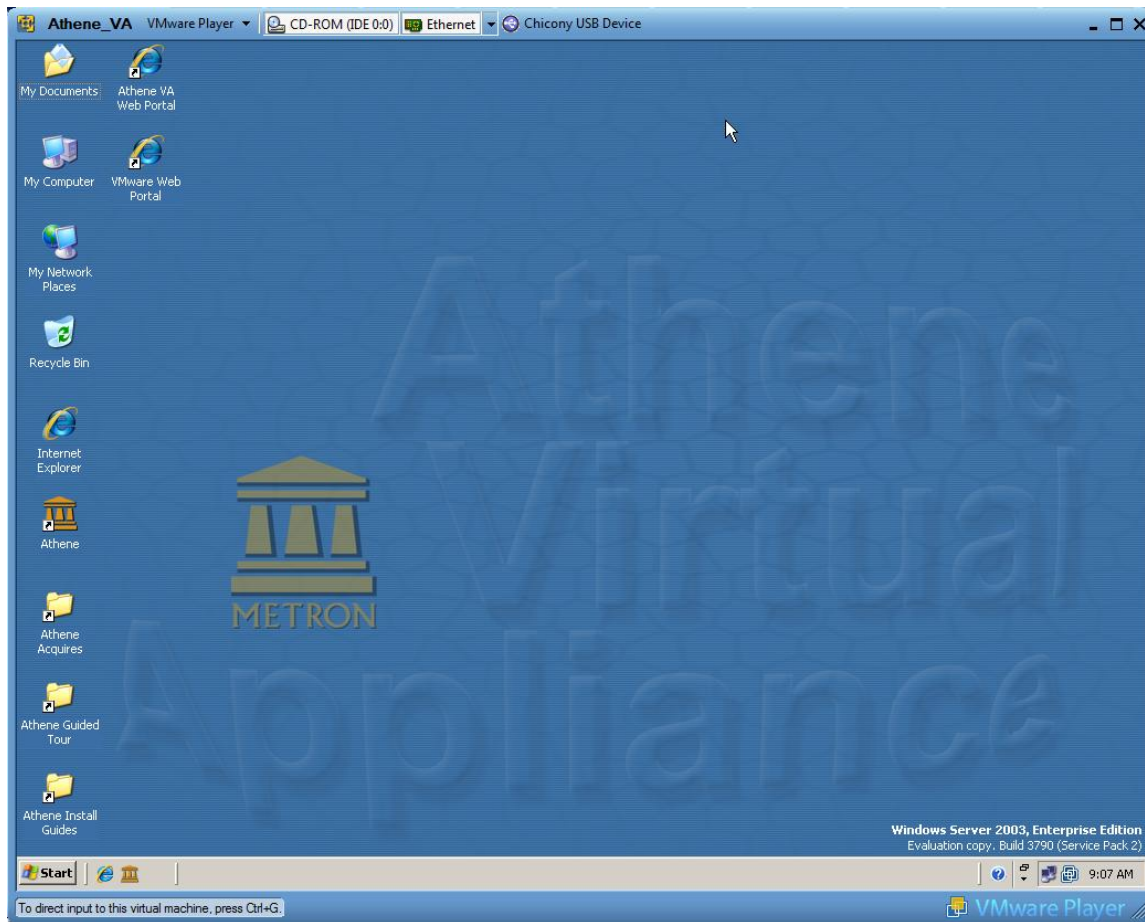


6320 Canoga Avenue
Suite 1500
Woodland Hills, CA 91367
Tel: (818) 227-5019 Fax: (818) 227-5099



Metron - Athene, Inc.

Once in the Athene Virtual Appliance you will receive the following screen.



6320 Canoga Avenue
Suite 1500
Woodland Hills, CA 91367
Tel: (818) 227-5019 Fax: (818) 227-5099